



Risk Management Systems

Developing enabling environments,
shovel-ready projects, and tools and
services for the Low Carbon Bioeconomy



QUANTAVISION

RISK MANAGEMENT SYSTEM

To manage the risks inherent in building out the Global Bioeconomy, GBS has developed the QuantaVision Risk Management System, which provides a systematic and effective holistic linking of managed risk with risk mitigation activities for every business decision, while maximizing profitability and long-term feasibility of these innovative businesses.

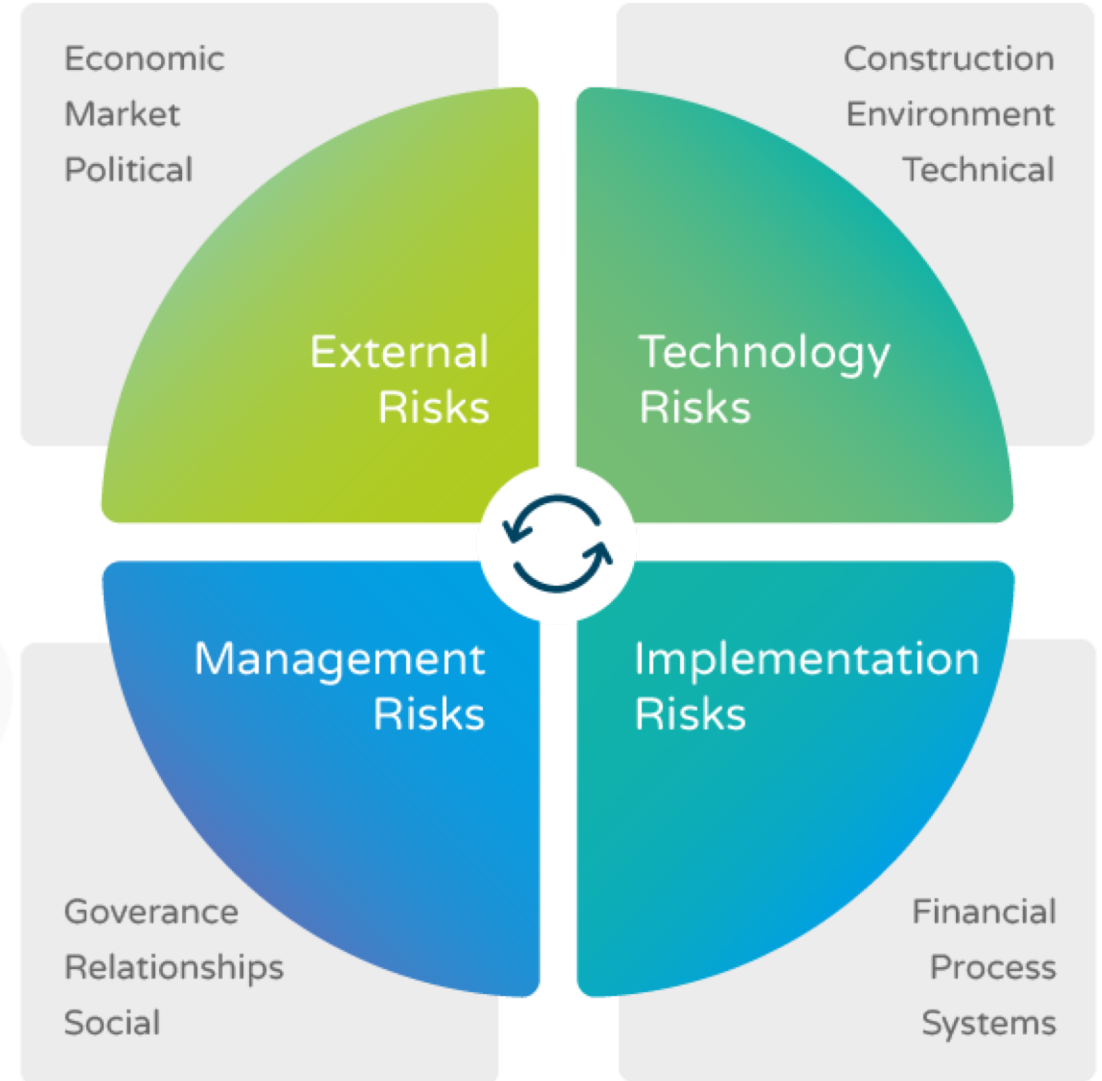
Important Quote

Companies with mature risk management practices outperformed their competitors financially, with companies ranked in the top 20% for risk maturity reporting earnings 3x higher than companies in the bottom 20%.

– 2013 Ernst & Young Study

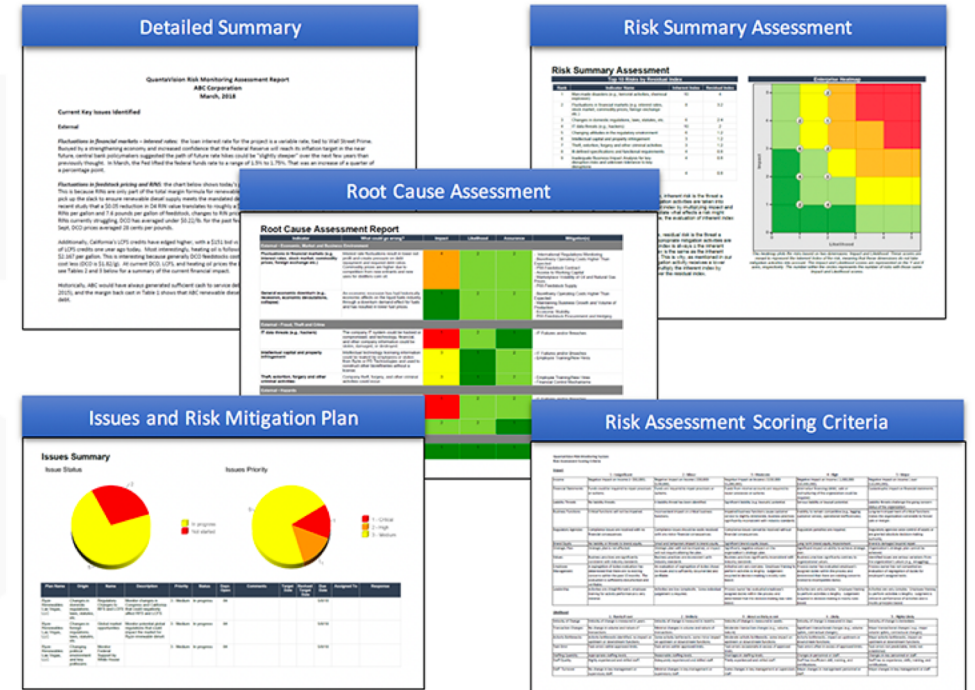
Section Title

- External Risks
 - Economic
 - Market
 - Political
- Technology Risks
 - Construction
 - Environment
 - Technical



Section Title

- Detailed Summary
- Risk Summary Assessment
- Root Cause Assessment
- Issues & Risk Mitigation Plan
- Risk Assessment Scoring Criteria

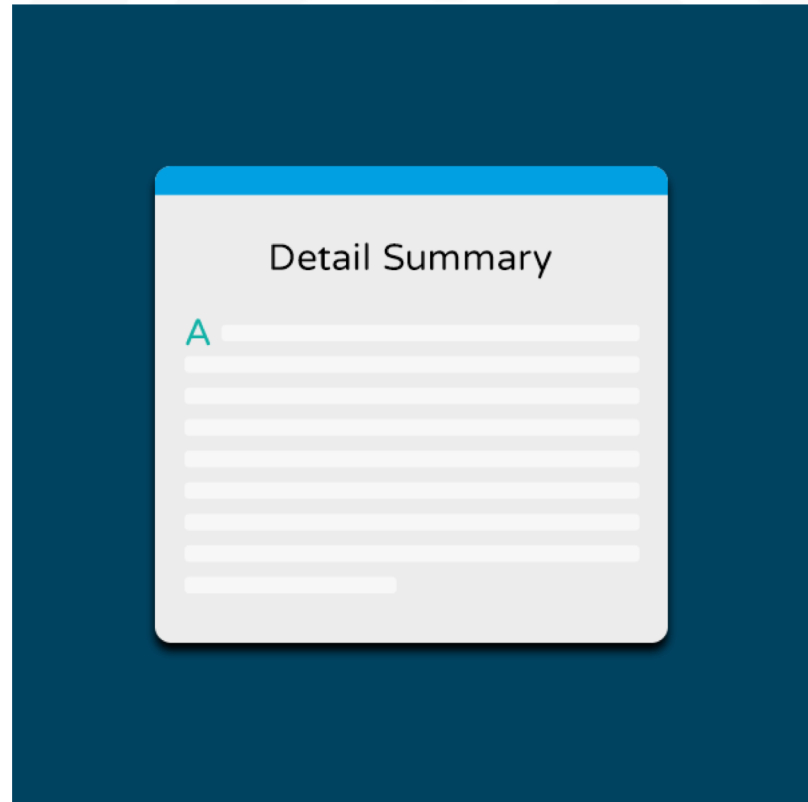




Vision

We're a company on a mission; check us out!

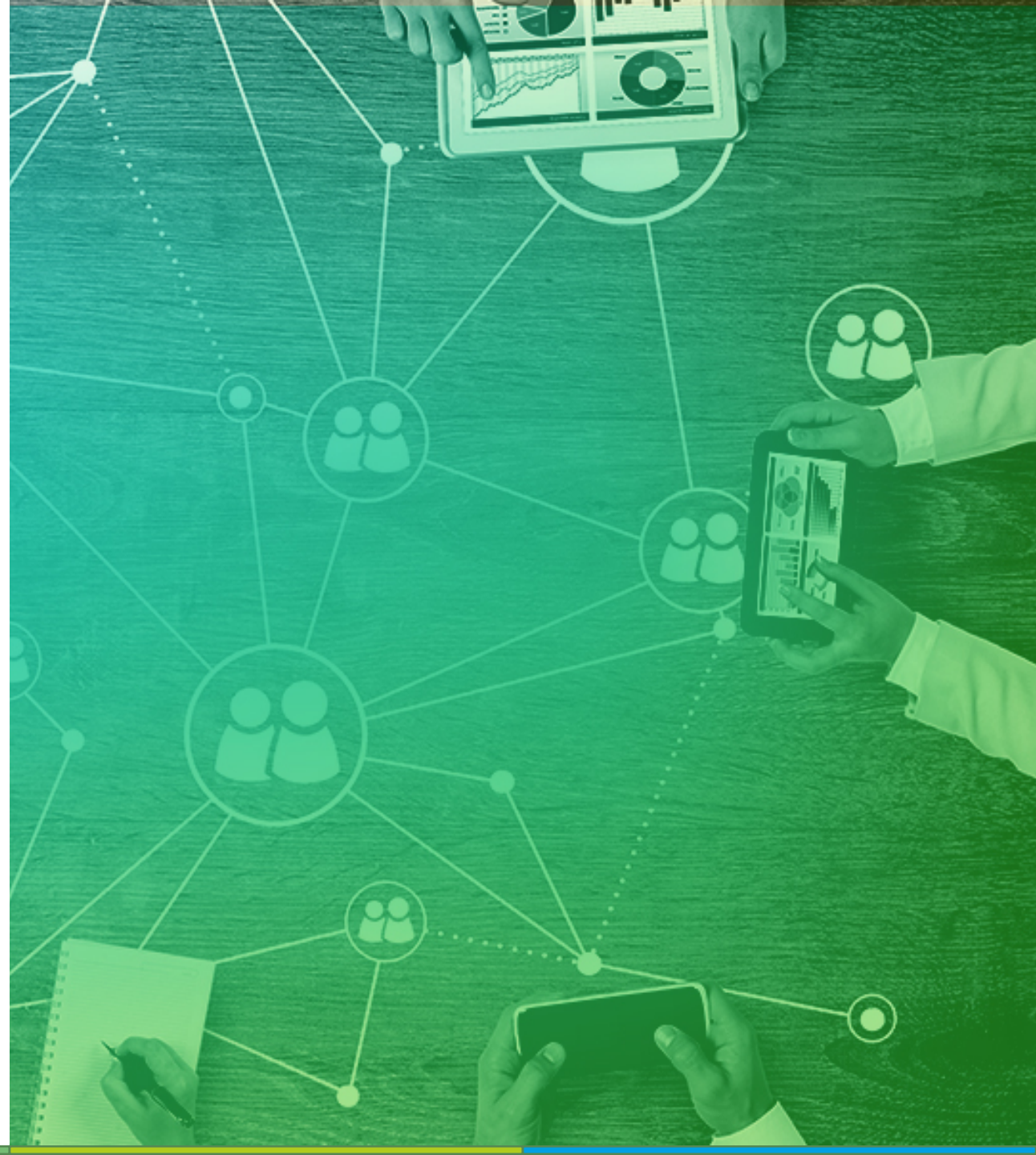
Section Title



The QuantaVision team provides comprehensive monthly or quarterly reports that provide detailed risk management activities for the top-rated risk areas, including risk tracking activities and progress reports. A detailed view of all of the risk categories and the current risk rating is also shown and ranked using the personalized Risk Assessment Scoring Criteria.

The QuantaVision business intelligence reporting engine can be customized, and all reports can be exported, printed or even scheduled to run at a set frequency for automatic delivery straight to your email inbox. The report can also be used to satisfy reporting requirements for lenders, investors, and others.

Questions?





Contact GBS

FIND US

1801 Century Park East
24th Floor
Los Angeles, CA 90067

EMAIL US

cindy@gbs.earth

PHONE US

(866) 480-4405